

MID-YEAR IMPACT REPORT FY 2021



**The
Family
Tree**

Raising families up.



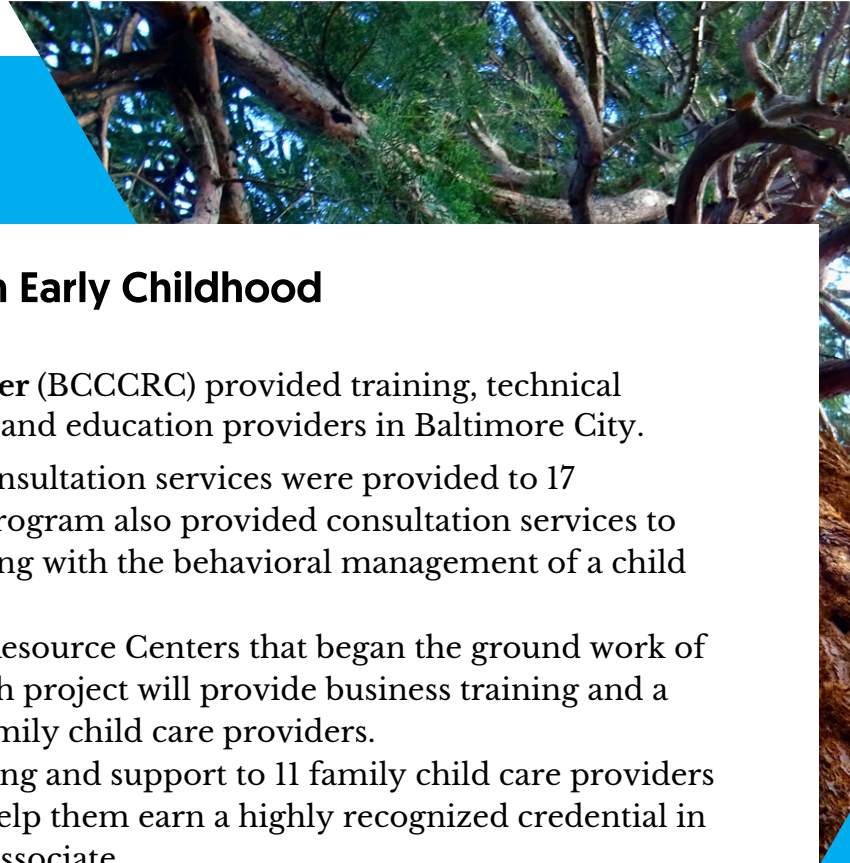
The coronavirus [COVID 19] pandemic continued to define our in-person service delivery system for the first half of this fiscal year, with almost all of our services being delivered virtually. This resulted in some challenges, but also created new opportunities. Without walls or geographic borders, we were able to extend our reach – serving families in different parts of the state. We were also able to forge new community connections, build partnerships, and secure new sources of sustainable support. Like our families and partners, we continued to adapt, adjust, and respond to the ever-changing world around us. In this extraordinary environment we were able reach over 21,000 individuals in just a six-month period.

Our most notable achievements are highlighted below. We take pride in what we have been able to accomplish with the support of our public and private partners and our Family Tree friends.

Thank you.

familytreemd.org

MID-YEAR IMPACT REPORT FY 2021



Investing in Children, Prenatal through Early Childhood

Our **Baltimore City Child Care Resource Center (BCCCRC)** provided training, technical assistance, and support to over 1,700 early care and education providers in Baltimore City.

- Infant & Early Childhood Mental Health Consultation services were provided to 17 Baltimore City children in child care. The program also provided consultation services to eight child care providers who were struggling with the behavioral management of a child or children in their care.
- BCCCRC was identified to be one of three Resource Centers that began the ground work of a Shared Services Pilot. This eighteen-month project will provide business training and a child care management system to twenty family child care providers.
- BCCCRC continued to provide virtual training and support to 11 family child care providers in a 15-month program that is designed to help them earn a highly recognized credential in the industry, the Child Care Development Associate.

Family Connects Maryland (FCM) provided 1 to 3 virtual home visits to 124 new Baltimore City mothers delivering at Sinai Hospital. In December, we also newly began offering FCM services to Baltimore County mothers in select zip codes, so far connecting 16 mothers and their families to at least one resource.

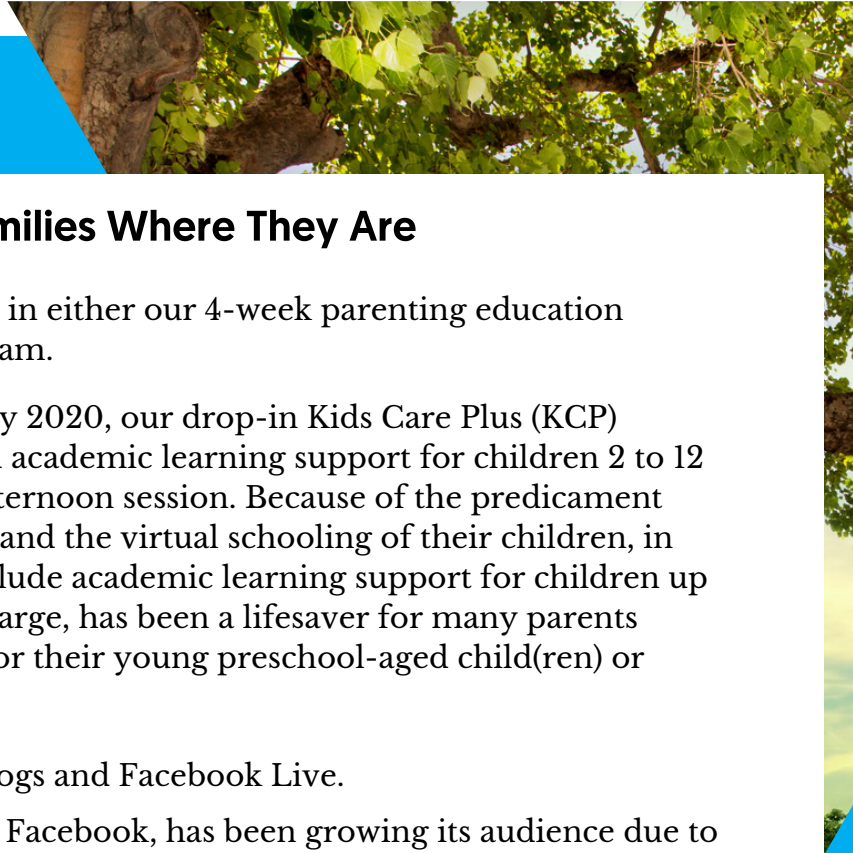
- The Baltimore Babies Project, FCM's evaluation component designed by the University of Maryland School of Social Work, began the review of data on moms who received FCM and those who served as a control group. We anticipate receiving preliminary findings early in 2021.
- FCM is undergoing its second accreditation cycle conducted by Duke University's Center for Family & Child Health.

Healthy Families America (HFA) is a long term (up to three years), evidence-based home visiting program that offers eligible prenatal and perinatal Baltimore City mothers parenting education and support services in their home.

- Healthy Families staff conducted 626 home visits to a total of 71 mothers and their new babies. Of the mothers enrolled prenatally, 100% had babies that were born full-term and 92% were developmentally on track.
- The Family Tree successfully completed the National HFA reaccreditation process. This process allows us to continue to serve families with the highest level of fidelity and adherence to the HFA evidence-based model.



MID-YEAR IMPACT REPORT FY 2021



Educating Parents and Supporting Families Where They Are

Family Education served a total of 331 parents in either our 4-week parenting education program or 10-week anger management program.

Kids Care Plus - Since resuming services in July 2020, our drop-in Kids Care Plus (KCP) program provided 1,327 hours of childcare and academic learning support for children 2 to 12 years of age in either a 3.5-hour morning or afternoon session. Because of the predicament many parents are facing with work, child care, and the virtual schooling of their children, in September, our KCP program expanded to include academic learning support for children up to 2nd Grade. KCP, which is offered free of charge, has been a lifesaver for many parents needing respite or help juggling work, caring for their young preschool-aged child(ren) or supporting their school-aged child.

Extending our Reach through social media, blogs and Facebook Live.

- Our Parenting Break, a weekly live show on Facebook, has been growing its audience due to our partnerships with other organizations. It reached a total of 1,875 individuals who tuned in to learn about various parenting topics and community resources.
- Ramping up both the number and depth of our blogs, we published over 20 blog posts during this period, reaching 3,830 people.
- Through these efforts, we increased our social media following by 11%.

24/7 Parenting HelpLine and Online Chat fielded 1,448 calls and live chats, providing reassurance, and connecting parents to vital resources, including The Family Tree's own parenting education and anger management classes, plus wider community resources so deeply needed in the COVID-19 environment.

Making Families and Children a Priority Through Advocacy

In 2019 and 2020, the Maryland House of Delegates stood up for children and survivors of childhood sexual abuse by overwhelmingly passing The Hidden Predator Act of 2020. Unfortunately, the COVID-19 pandemic and the early closure of the Maryland General Assembly meant that the bill did not move forward in the Maryland Senate. As a result, The Family Tree and other child advocates are supporting the Hidden Predator Act of 2021 (SB 134/HB263):

The Hidden Predator Act of 2021 would:

- Eliminate the civil statute of limitations going forward for child sexual abuse.
- Create a lookback window for those victims who have previously been barred by the statute of limitations, allowing them to file suit for a period of two years.
- Remove the "statute of repose," making it clear to the courts, the public, and survivors that the Maryland General Assembly did not intend to vest constitutionally protected property rights in child sexual predators nor in the individuals and organizations that hid predators from discovery and prosecution.



MID-YEAR IMPACT REPORT FY 2021



Building Stronger Communities through Partnerships

The Family Tree continued to actively participate on key steering committees and coalitions.

- **Healing City Baltimore** focuses on healing the city from trauma, violence, and racial inequality. The Family Tree proudly serves on the Healing City Baltimore Steering Committee headed by City Council member Zeke Cohen.
- **Maryland Essentials for Childhood (MEFC)** is a collective impact coalition which The Family Tree co-leads in conjunction with the Maryland State Council on Child Abuse & Neglect. The coalition is inclusive of over 50 professionals and members with life experiences. Its focus is to raise awareness and commitment to safe, stable, nurturing relationships and environments and prevent child abuse and neglect; use data to inform actions; create a context for healthy children and families through norm change and programs; and promote policies that support healthy families and children.
 - During this period, our focus was twofold. First, supporting families through establishing a coordinated resource response during COVID; and second, evaluating the role racism plays in the child welfare system as well as other government systems that can translate into public policy reforms.
- **ACE Interface** provides trainings on Adverse Childhood Experiences (ACEs) to members of both the professional and general communities.
 - A total of 13,342 professionals and lay people participated in ACE trainings across the state, expanding the population of those who can engage in community healing efforts.
 - The Family Tree renewed its exclusive agreement for three years with the Washington State developers (Rob Anda & Robert Porter) to secure our state leadership training role in preventing adverse childhood experiences.
 - To keep up to date and connected to the great work going on around the state, please take a minute to view and join the Maryland ACEs Action page online.

Looking Ahead

We are able to remain at the forefront in the field of child abuse and prevention only through your generous support. In this time of extraordinary stress for families, our deepest gratitude goes to our Board of Directors, donors and public and private funders who make our work with families and children possible. With your help, we continue to transform the lives of Maryland children.



2108 N Charles St.
Baltimore, MD 21218



familytreemd.org